



Japanese Bird Art, 1950 to present day

Part 6

SHIKISHI

by 50 artists

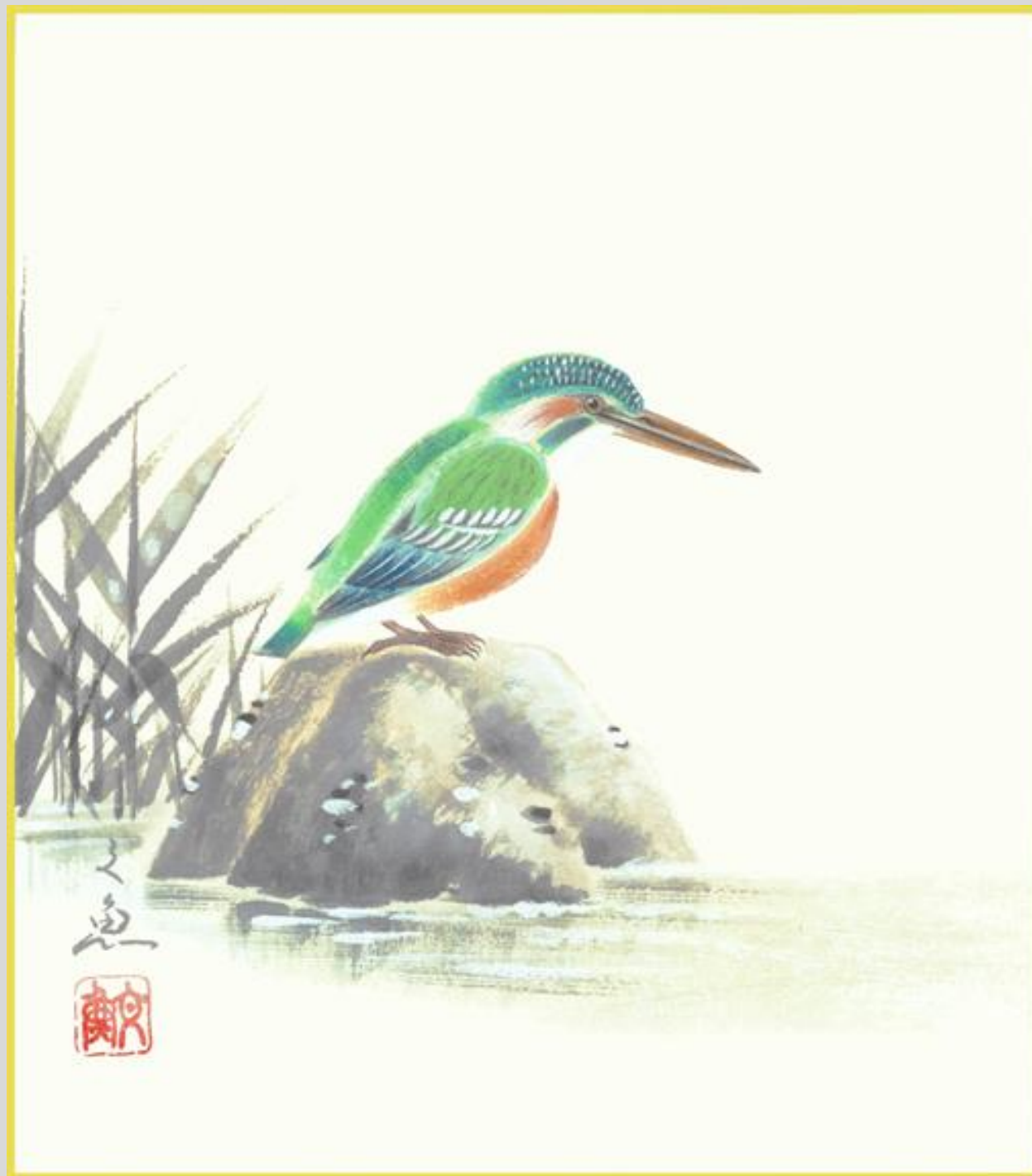
Introduction

Shikishi is the Japanese name for a paper-covered fiber board used primarily by Japanese painters and calligraphers for their art. It is relatively small in size and almost square (i.e., typically 245 x 275 mm) with a border resembling gold leaf. Fifty examples of shikishi from the Reader Collection of Japanese Art are presented in this virtual exhibition. The Reader Collection focuses on flower and bird art so the fifty examples are pictures of flowers and (or) birds, each by a different artist who was active during the last half of the 20th century. While each artist had a unique style, their pictures can be grouped based on the level of accuracy they used to depict their flower and bird subjects. Some artists (examples 1-22) drew them objectively (i.e., accurate shape and color) while other artists (examples 13-50) drew them semi-objectively (i.e., less accurate shape and [or] color). Even when drawn only semi-objectively a species' identity was unmistakable so its name is given along with artist's name for each of the fifty examples. The size of each shikishi is 245 x 275 mm, unless otherwise stated.

1 Blue-and-white flycatcher
(*Cyanoptila cyanomelana*) by
Asao Hayashi



2 Common kingfisher (*Alcedo atthis*) by **Bungyo Nakatani**



3 Narcissus flycatcher
(*Ficedula narcissina*) by
Hōshun Yamaguchi



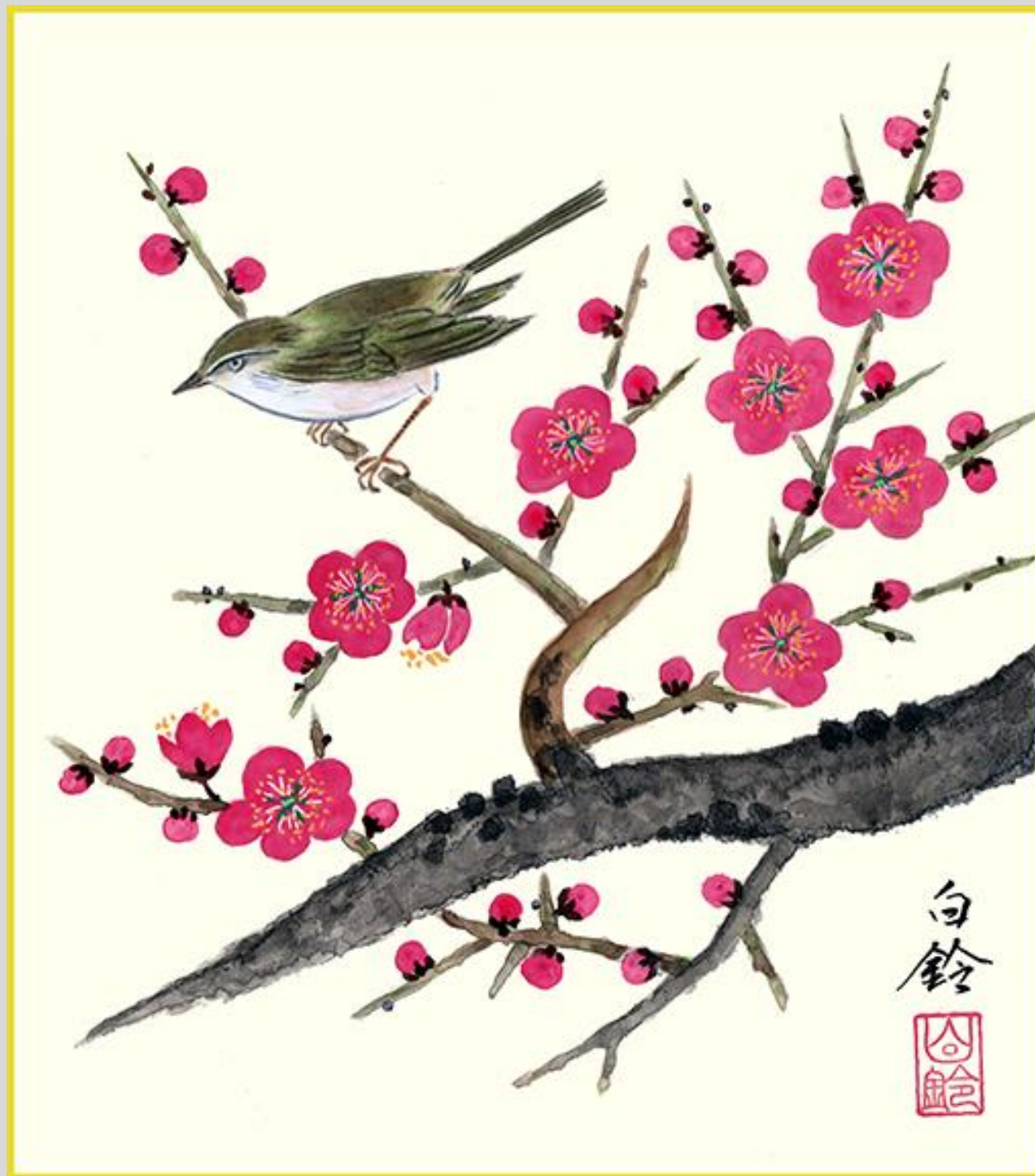
4 Red-crowned crane (*Grus japonensis*) by Taisei Satō



5 Japanese bush-warbler
(*Cettia diphone*) by Shunpō
Oguri



6 Japanese bush-warbler
(*Cettia diphone*) by Hakurei
Matsuura



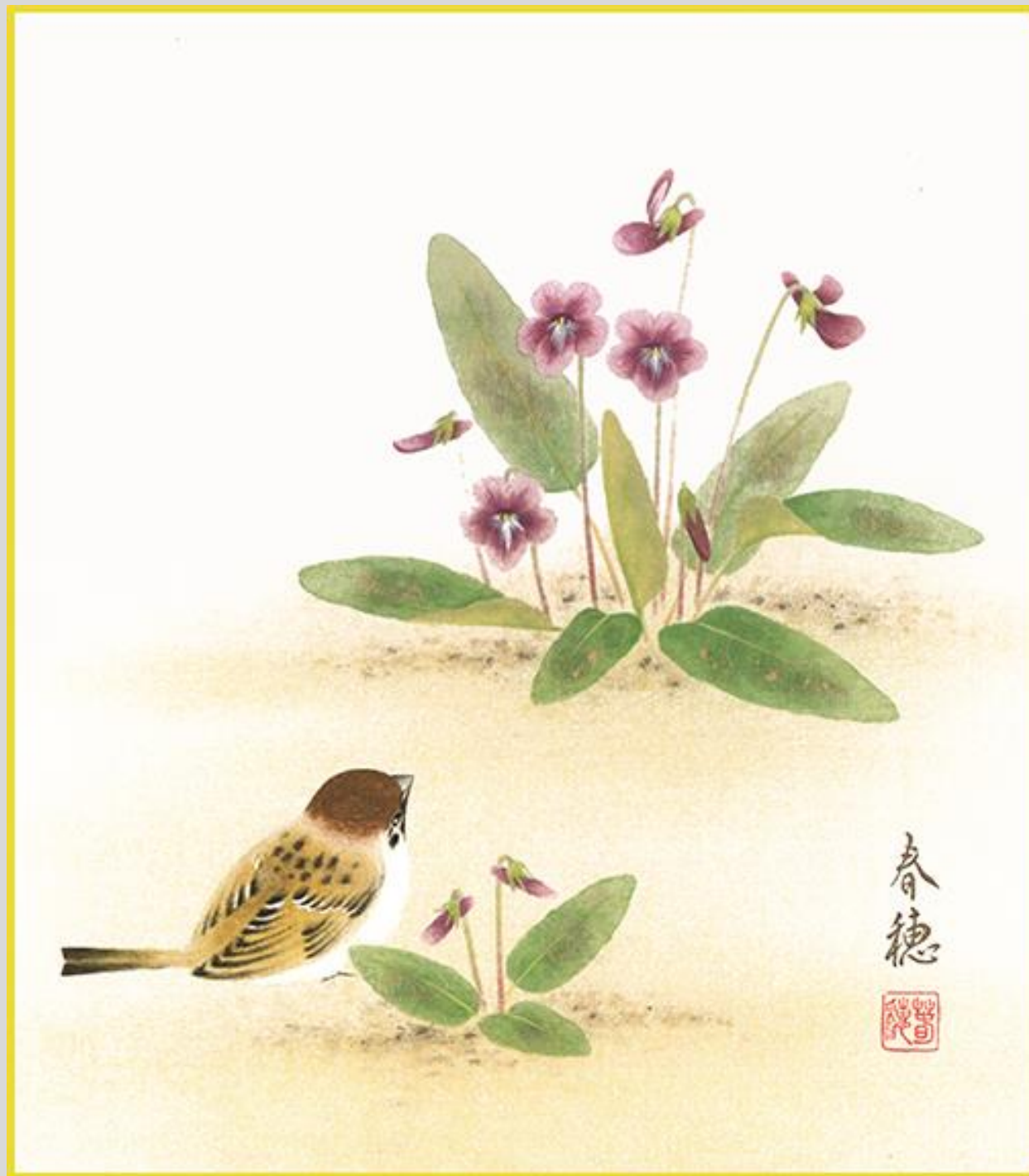
7 Japanese bush-warbler
(*Cettia diphone*) by Yuchiku
Kosugi



8 Japanese bush-warbler
(*Cettia diphone*) by Ōgetsu
Yamamoto



9 Eurasian tree sparrow
(*Passer montanus*) by **Shunsui
Fujita**



10 Japanese white-eye
(*Zosterops japonicus*) by Kōhō
Shimada



11 Red-crowned crane (*Grus japonensis*) by Tadanobu Tajima



12 Eurasian tree sparrow
(*Passer montanus*) by Tōse
Moriyama



13 Eurasian tree sparrow
(*Passer montanus*) by
Gyokushō Matsuhashi



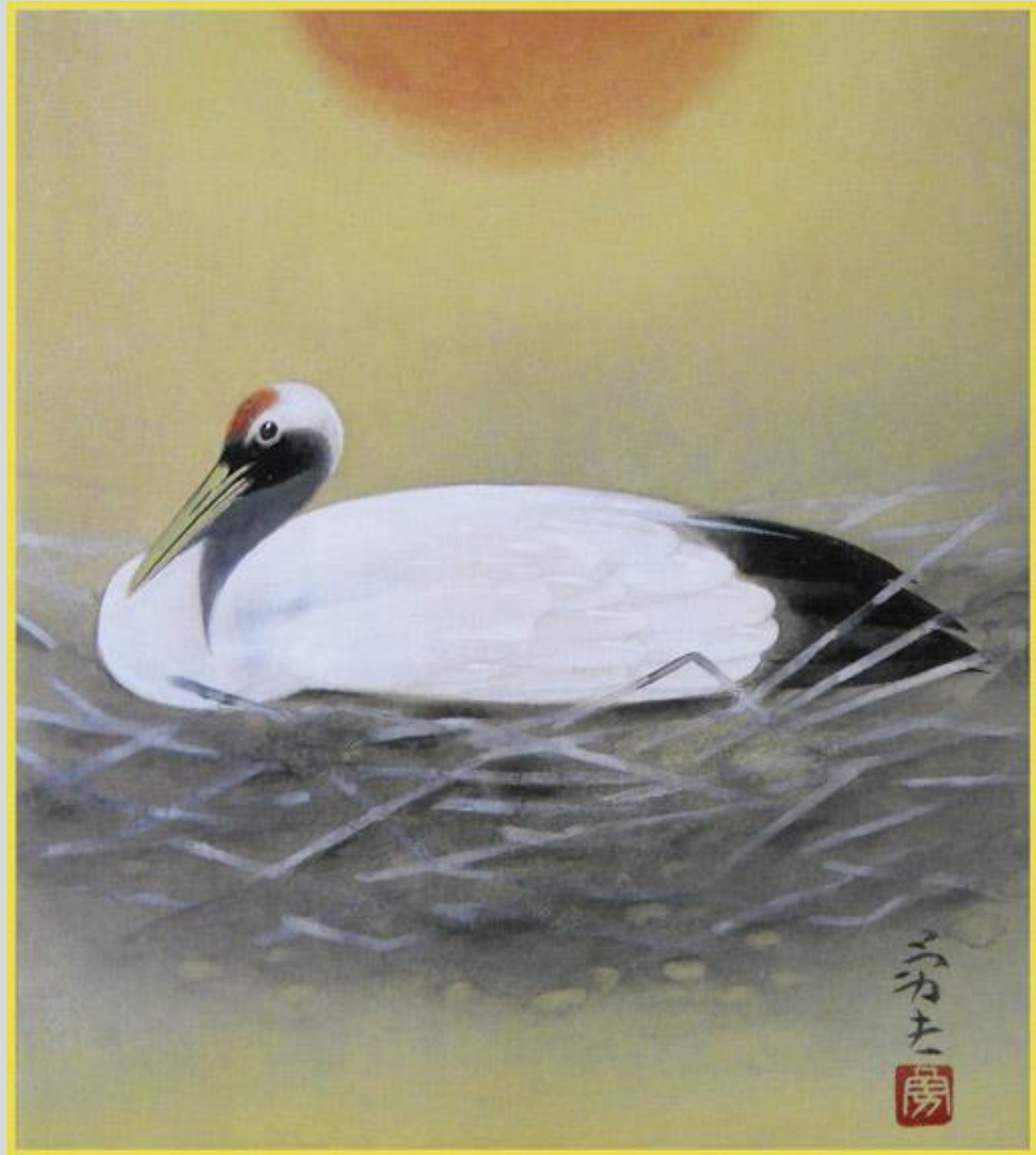
14 Domestic fowl (*Gallus gallus*) by Yōki Shimizu



15 Red-crowned crane (*Grus japonensis*) by **Fuyohiko Yanagihara**, 120 x 135 mm



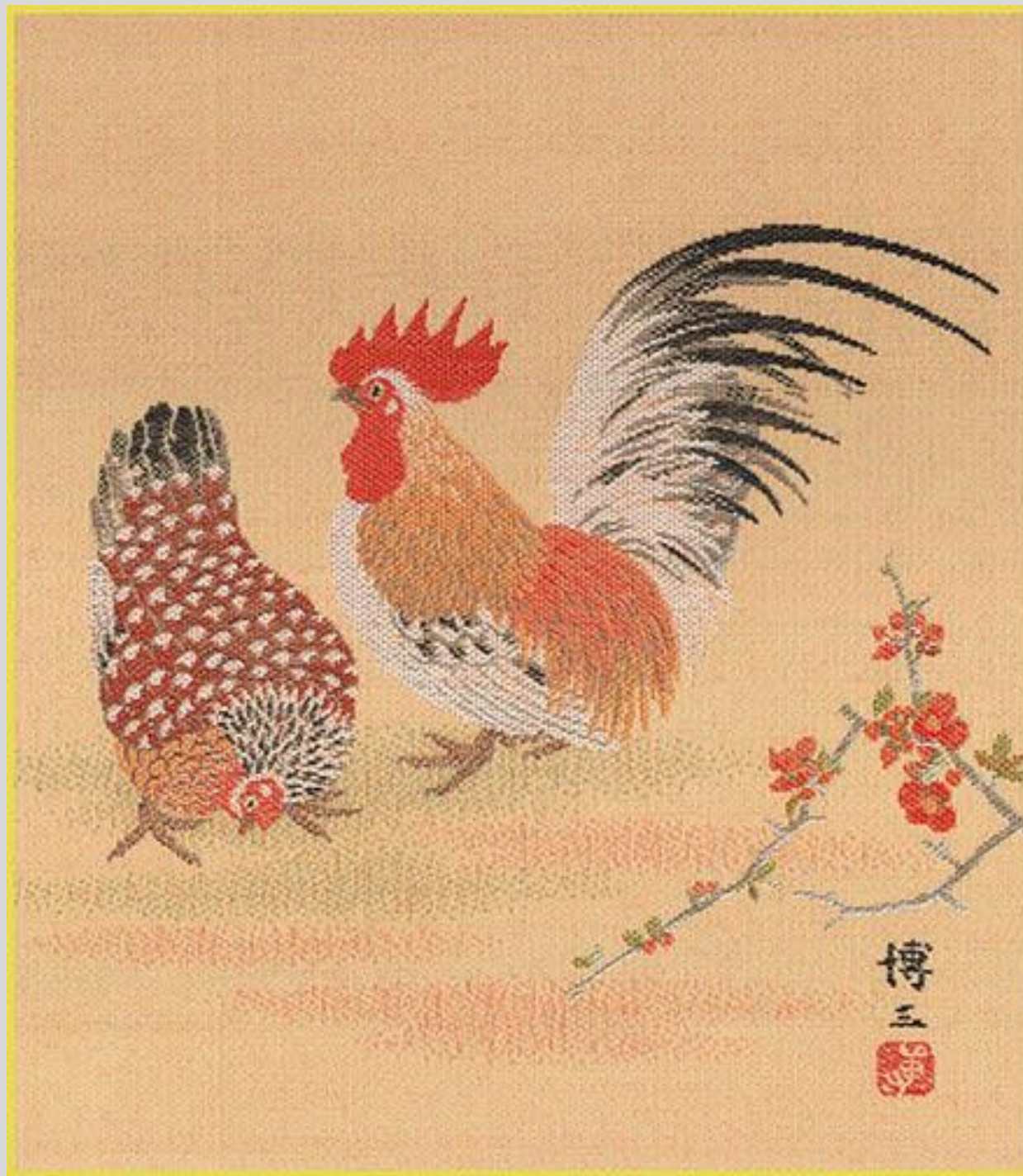
16 Red-crowned crane (*Grus japonensis*) by Isao Kawahara



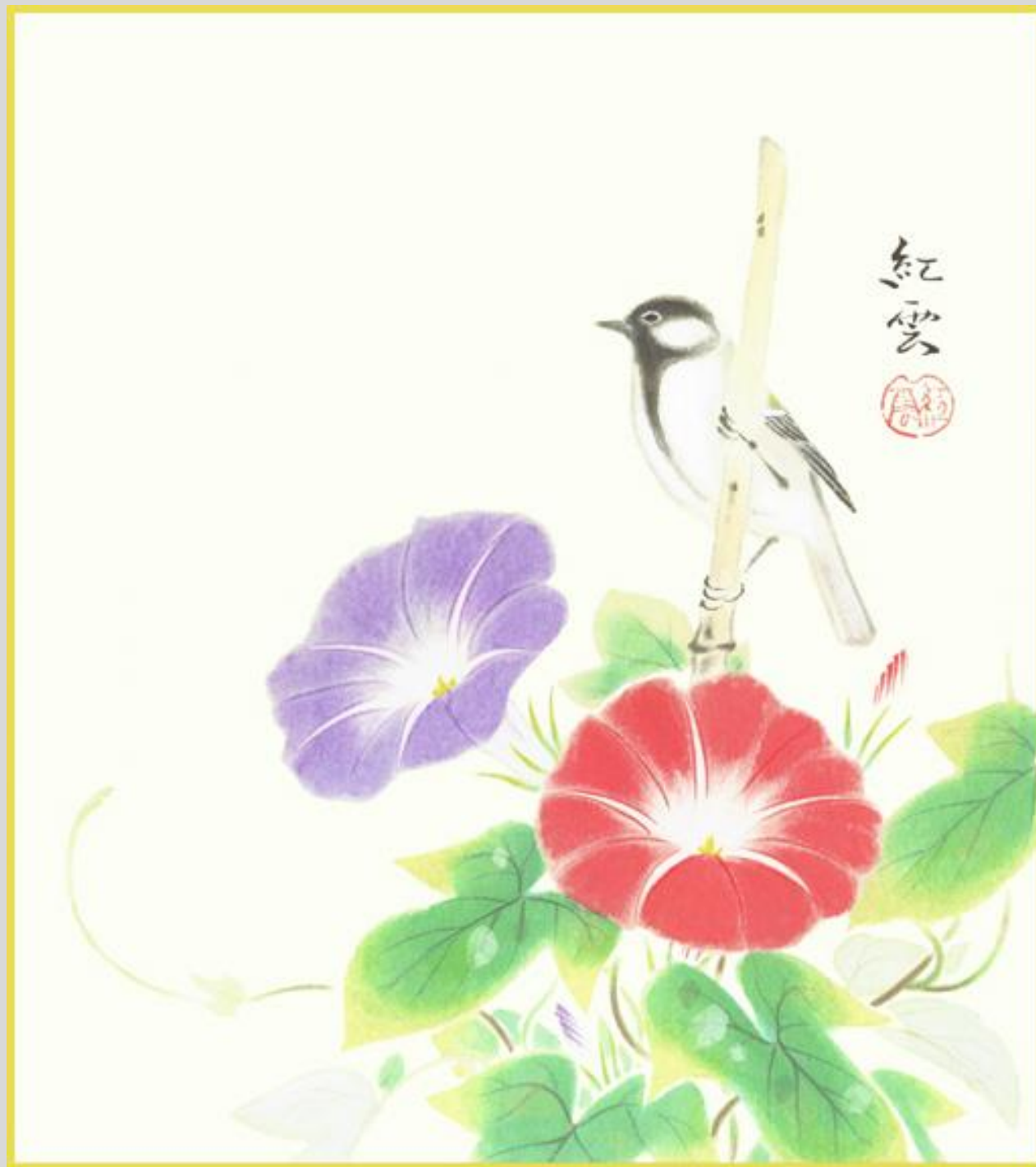
17 Eurasian tree sparrow
(*Passer montanus*) by Ryōhei
Kimura



18 Domestic fowl (*Gallus gallus*) by Hirozō Murata



19 Great tit (*Parus major*) by
Kōun Mutō



20 Red-crowned crane (*Grus japonensis*) by Kazan Oshima



21 Red-crowned crane (*Grus japonensis*) by Masayuki Ōno



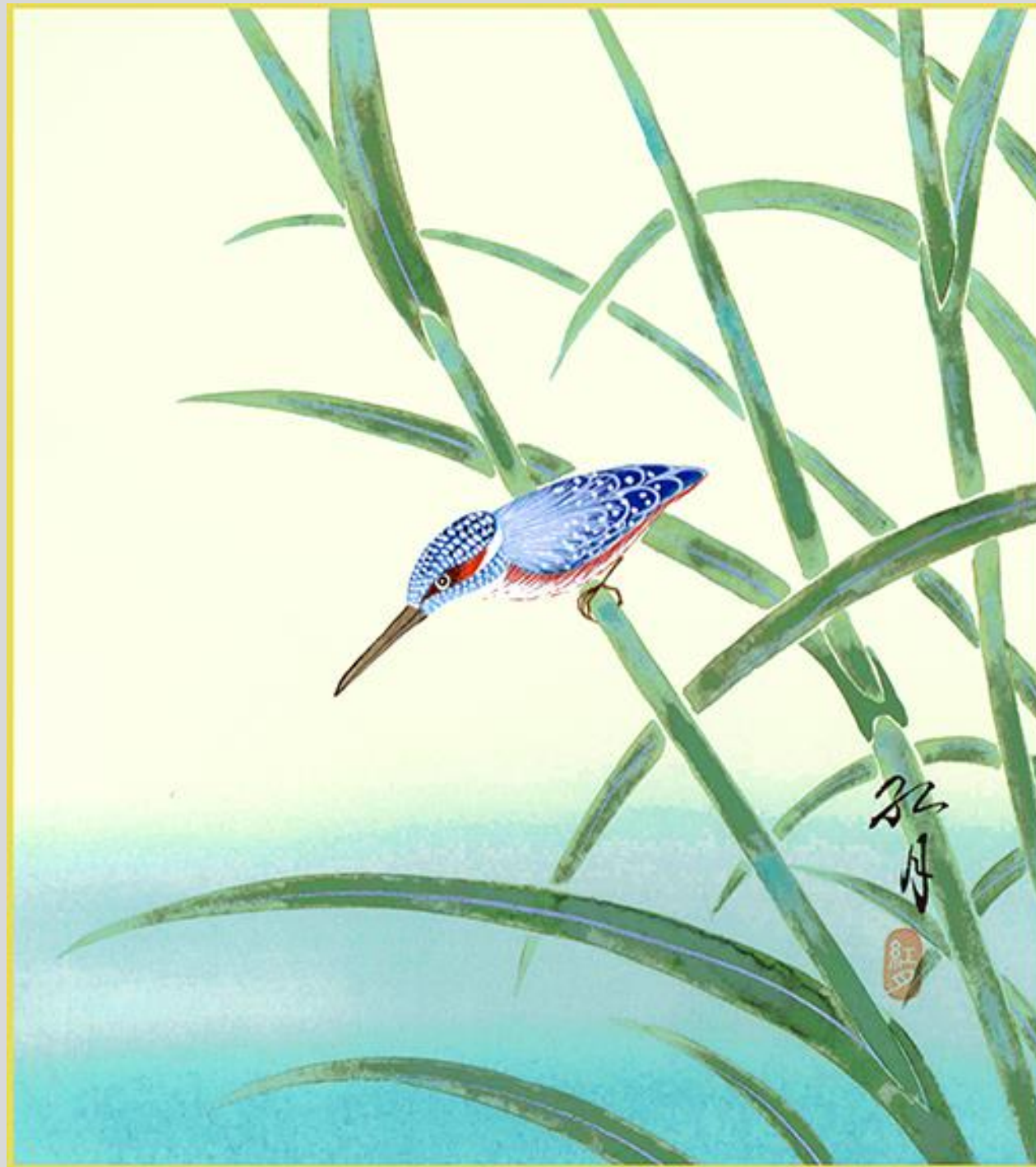
22 Eurasian tree sparrow
(*Passer montanus*) by
Keigetsu Sugiura



23 Great tit (*Parus major*) by
Keiju Imai



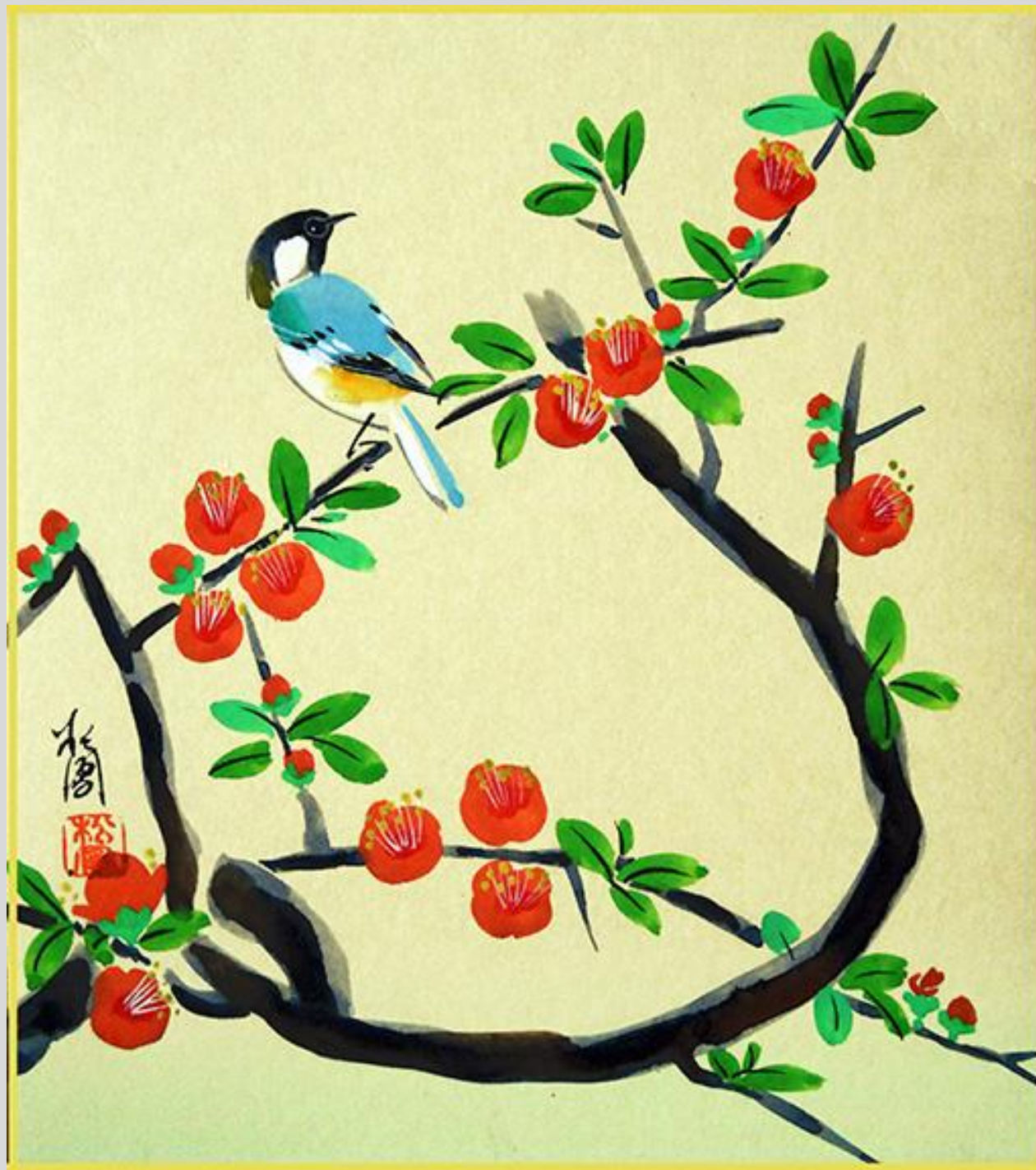
24 Common kingfisher
(*Alcedo atthis*) by Kōgetsu
Koizumi



25 Japanese bush-warbler
(*Cettia diphone*) by Hiroshi
Kuboi



26 Great tit (*Parus major*) by
Shōhō Mizumo



27 Eurasian tree sparrow
(*Passer montanus*) by **Yoshio
Miura**, 245 x 335 mm



28 Eurasian tree sparrow
(*Passer montanus*) by Kingyo
Nishimura



29 Eurasian tree sparrow
(*Passer montanus*) by Hōshun
Hino



30 Great tit (*Parus major*) by Hiroshi Matsui



31 Blue-and-white flycatcher
(*Cyanoptila cyanomelana*) by
Kōyō Suzuki



32 Japanese bush-warbler
(*Cettia diphone*) by Saihō
Matsuo



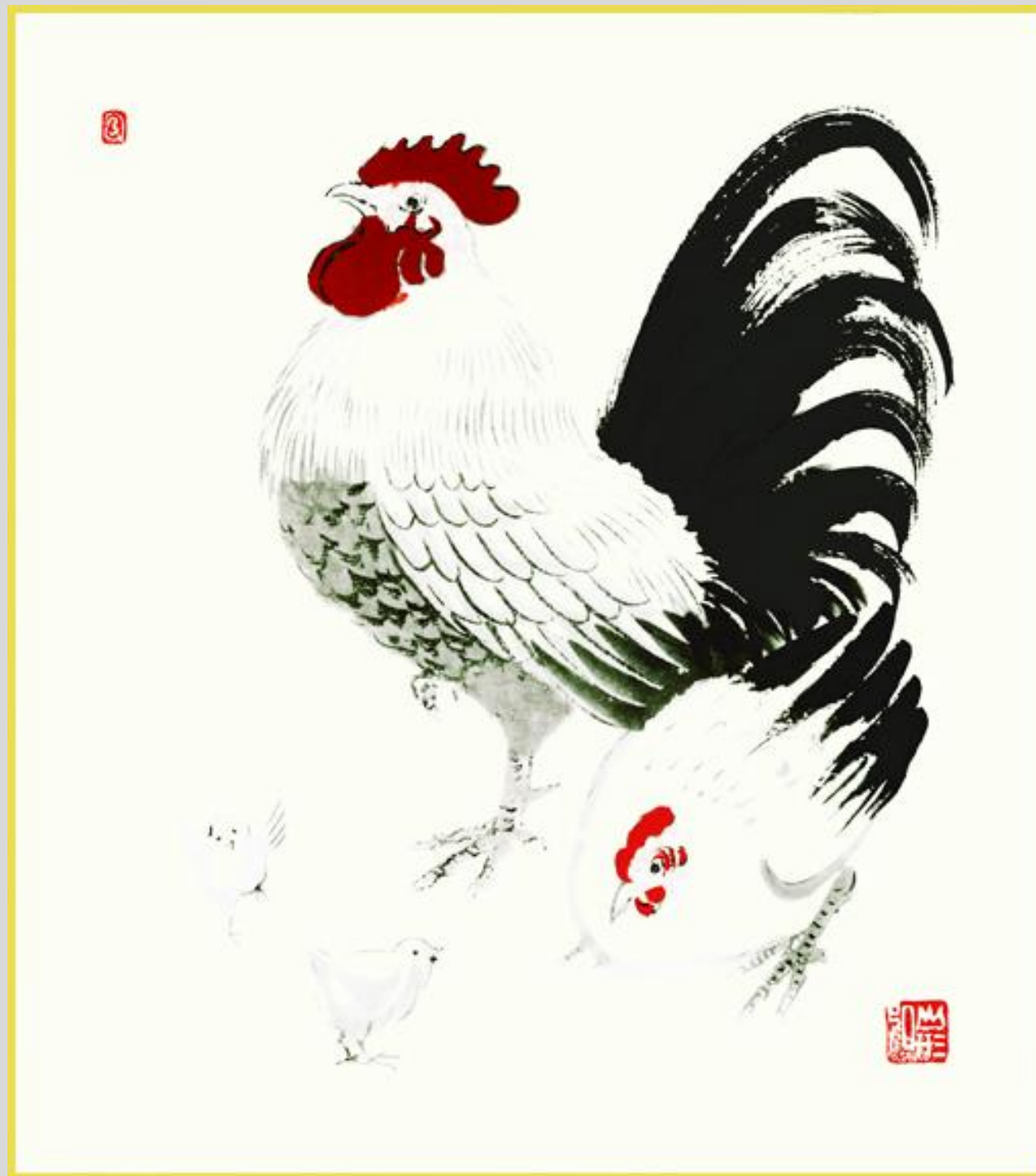
33 Mandarin duck (*Aix galericulata*) by Kazune Kanetane



34 Red-flanked bluetail
(*Tarsiger cyanurus*) by
Hōgetsu Jinbo



35 Domestic fowl (*Gallus gallus*) by Hiromu Yamagata



36 Gray wagtail (*Motacilla cinerea*) by Koji Satō



37 Eurasian tree sparrow
(*Passer montanus*) by
Kichiyuki Satō, 120 x 140
mm



38 Japanese bush-warbler
(*Cettia diphone*) by Kiyoshi
Terashima



39 Japanese white-eye
(*Zosterops japonicus*) by
Ryōen Yamaguchi



40 Blue-and-white
flycatcher (*Cyanoptila
cyanomelana*) by **Seika Tsuji**



41 Eurasian tree sparrow
(*Passer montanus*) by Sensō
Aizu



42 Daurian redstart
(*Phoenicurus aureus*) by
Seihō Matsuda



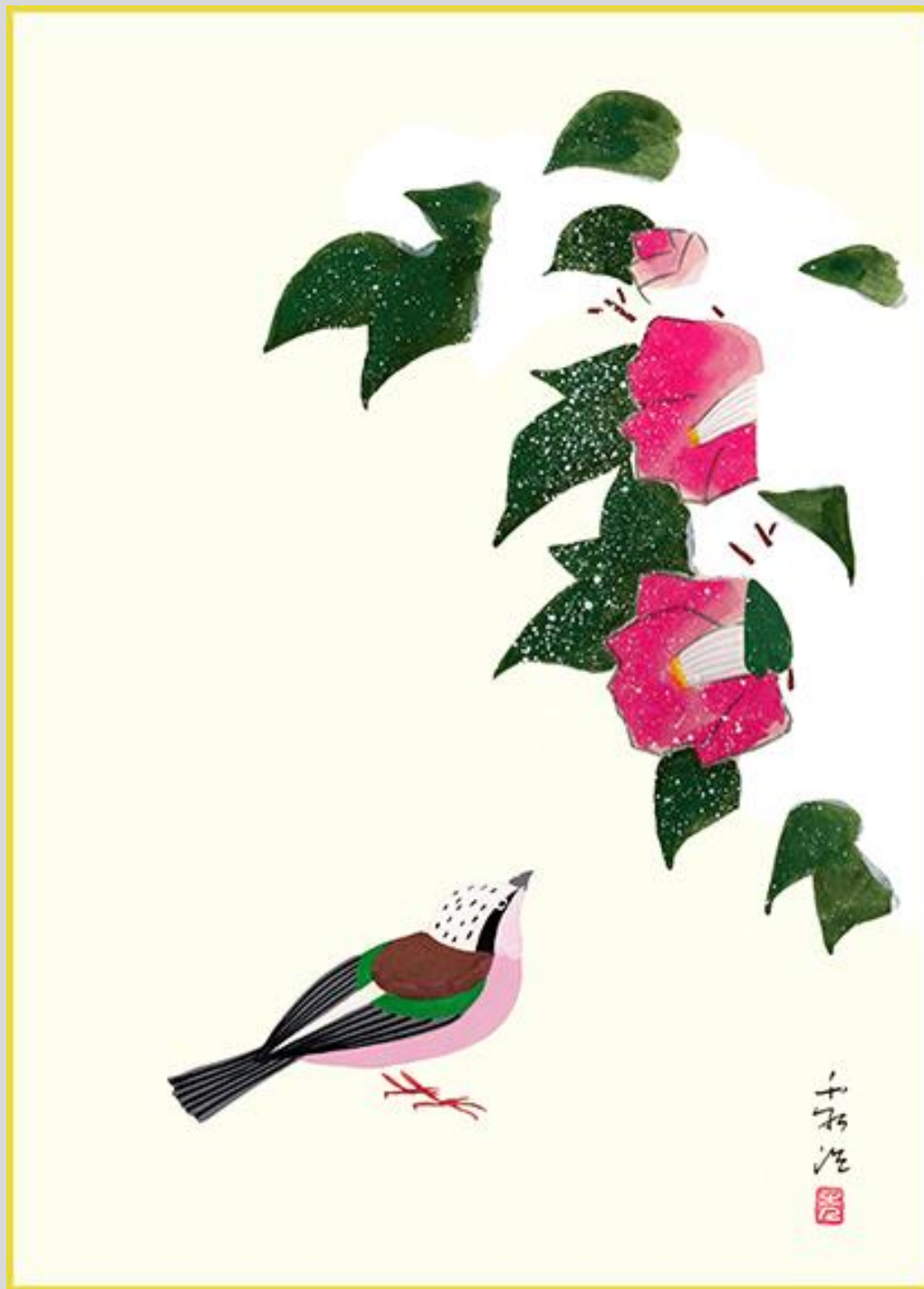
43 Great tit (*Parus major*)
by Kōsen Iwashita



44 Long-tailed tit (*Aegithalos caudatus*) by Shūsō Katō, 335 x 240 mm



45 Eurasian jay (*Garrulus glandarius*) by **Hideharu Morita**, 240 x 335 mm



46 White wagtail
(*Motacilla alba*) by Seikan
Terada



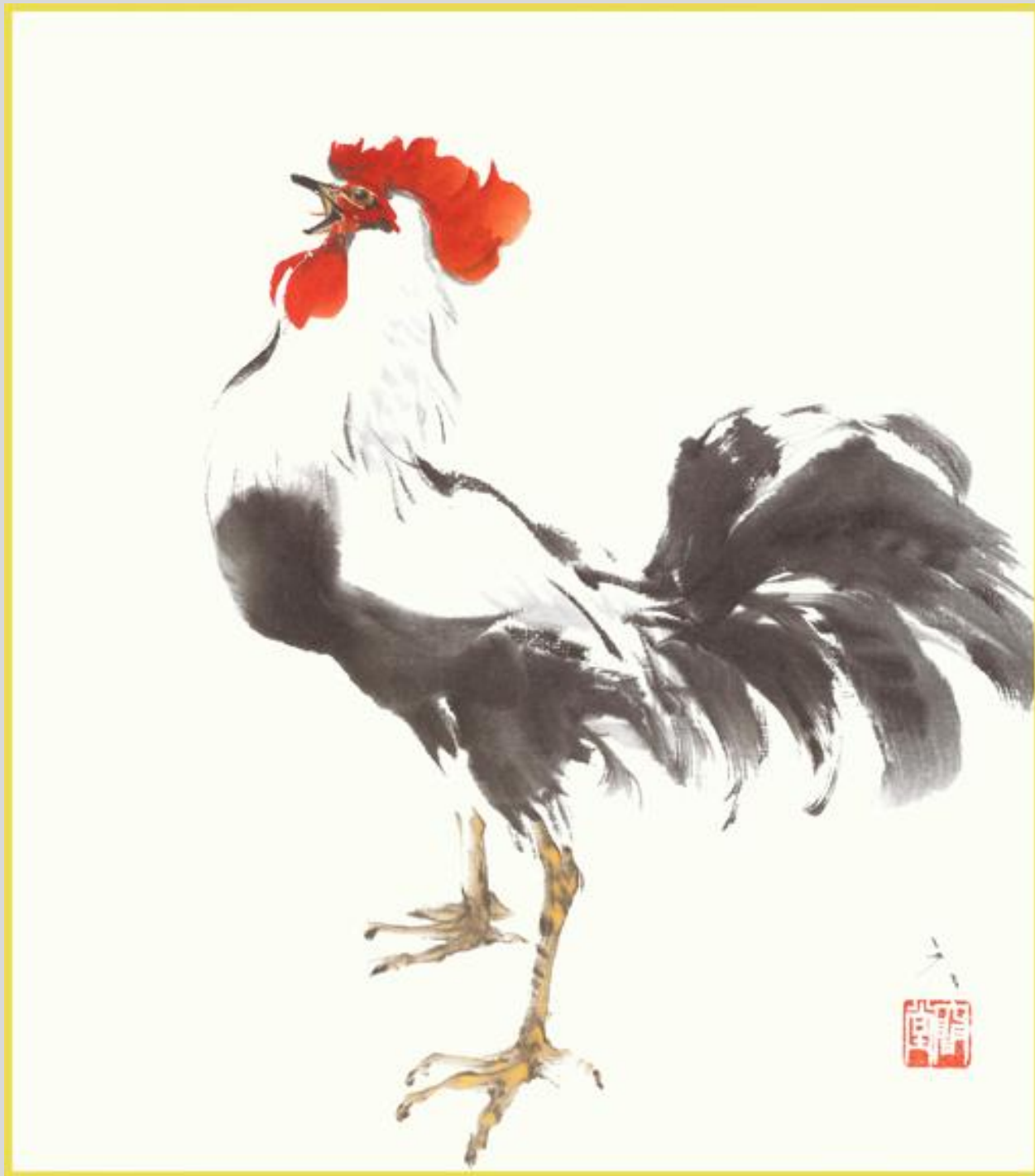
47 Japanese white-eye
(*Zosterops japonicus*) by
Kakuzan Hayashi



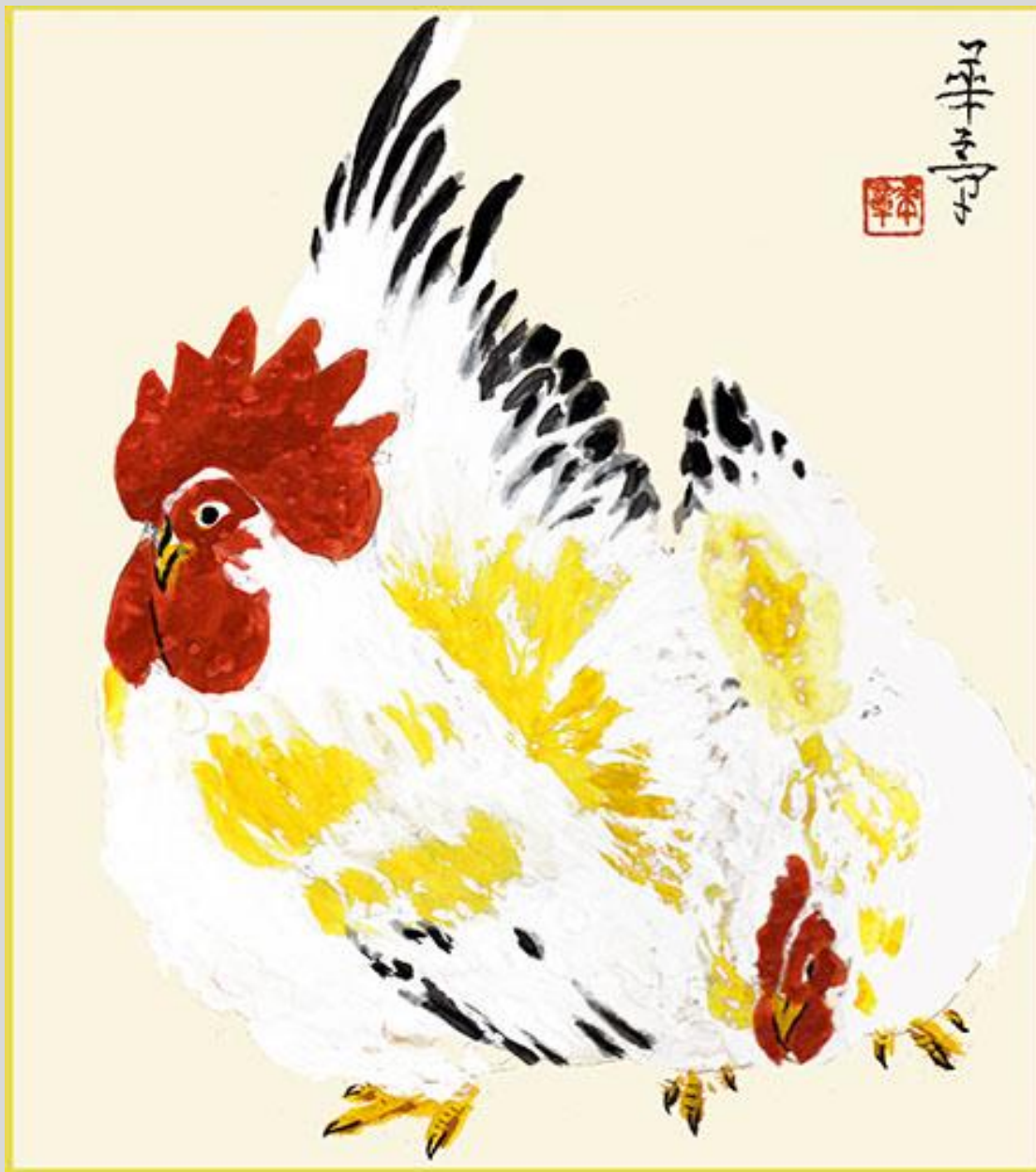
48 Rock dove (*Columba livia*) by Tadashi Yoshii



49 Domestic fowl (*Gallus gallus*) by Rokkendō Fujiwara



50 Domestic fowl (*Gallus gallus*) by Kashō Yoshida



[Back to Exhibitions](#)